

treatment. Later the newer technique of using a combination of chlorine and ammonia, was adopted. The result of these precautions, plus the quality of the original water has produced a record over the years unblemished by any disease that can be traced to the town's water supply.

In 1940, during the presidency of the late William L. Blake another step was taken by the company to improve its water supply and also to augment it. A shallow water well was constructed at a site near the town gravel pits and this has since been furnishing a steady daily gallonage of pure water which has been mixed with the water that has come from "B" stream.

The last outstanding shares of stock came into the hands of the company in May, 1939, giving it thereafter ownership of the full 2000 shares.

CONSUMPTION INCREASES

The company, insofar as its water department is concerned, has shown a steady and healthy growth paralleling the development of the town and consistently meeting all demands. In 1887 and 1888, in its early years, the average daily consumption of water was 35,000 to 40,000 gallons. In 1940 this figure had mounted to a million gallons a day. Today the average daily consumption averages approximately 1,250,000 gallons. The highest on record was 3,100,000 gallons.

In 1900 the company served some 45 hydrants. Forty years later there were 123 such connections on the line. At the turn of

the century figures showed just a little more than 33,000 feet of pipe in use. In 1940 extensions had increased the mileage by two and one-half times, to 92,300 feet. As this is written the townspeople of Houlton require 121,982 feet of pipe to conduct their water supply.

ELECTRICAL SERVICE

At about the time the Houlton Water Company was getting underway, electrical service, now one of its departments, came into being in the town. In that year two companies were started withing a few days of each other with the object of generating and distributing electric power.

E. Merritt and Sons, then a prominent local firm engaged in several lines of business, was the first to generate current. Following a few days later was the organization known as the Houlton Electric Company. The latter lasted the longer of the two, functioning until 1908, the year the Houlton Water Company acquired it to establish its own electric department.

At that time current was generated by a steam operated plant. The equipment consisted of two arc generators and a steam engine of 50 horsepower capacity. Steam to operate the plant was supplied by the boilers.

NEW PLANT IN '93

In 1893 a new plant of increased capacity was installed. This consisted of a Babcock & Wilcox high pressure boiler of 140 horsepower capacity, an improved Greene engine of 125 horsepower

and a General Electric generator of 75 kw capacity. This supplanted the original steam engine and one of the arc generators. The other was retained for street lighting and was in use up until 1907.

It was in 1906 that the first major change in the source of local electric energy took place. In that year a contract was made with the then Maine and New Brunswick Electrical Power Company, now the Maine Public Service Company.

The minutes of a meeting held Feb. 2, 1906, shows a vote that Clarence H. Pierce be authorized and empowered to execute a contract with this company for the supply of electricity and electrical power.

STEAM PLANT ABANDONED

The steam plant was withdrawn from use but was kept as a standby substitute until 1936, when it was replaced by a 250 horsepower Brill-Westinghouse gasoline engine for emergency power to operate the machinery at the pumping station and for other uses. Several years prior to this time, in 1923, lines were completed between here and Medway to connect with the Bangor Hydro Electric Company, thus making available another source of power, giving the town two from widely separated points.

Sub-stations that have been set up by the company began with one of 300 KV A which was soon increased to 600 KV. A. In 1927 additional equipment was installed for a further increase to 2100 KV A.

The accelerated growth of electrical appliances and motors in the home, in industry, and on the farm is reflected by the fact that it has been necessary to add two additional substations of 1500 KVA capacity each to the system; one in 1940 and the second in 1950. The present capacity of the system is now 4500 KVA.

In 1947 the Board of Directors authorized the purchase of a 1,000 KW Diesel generator at a purchase price exceeding \$200,000. The Maine Public Service Company then agreed to purchase this unit by payment of principal and interest over a ten-year period, as well as assuming the entire responsibility for its operation and maintenance during this period. However, the Houlton Water Company retains an option to purchase the plant at the expiration of the ten-year period at cost less depreciation.

NEW SUB-STATION

As the growth continues upward each year, the Houlton Water Company must keep pace. In view of this, a substation transformer of 2500 KVA capacity has recently been purchased and will be installed during 1958; together with the necessary switch gear and associated equipment.

By way of presenting this growth period it would be well to compare the residential usage. In 1935, the average domestic use was less than 500 kwh for which was paid an average price of 6.07 cents per kwh. During 1956, the average domestic use had grown to 3,015 kwh, which cost an average of 2.81 cents per kwh. These figures prove most forcefully the rate of growth of the Electric Department.

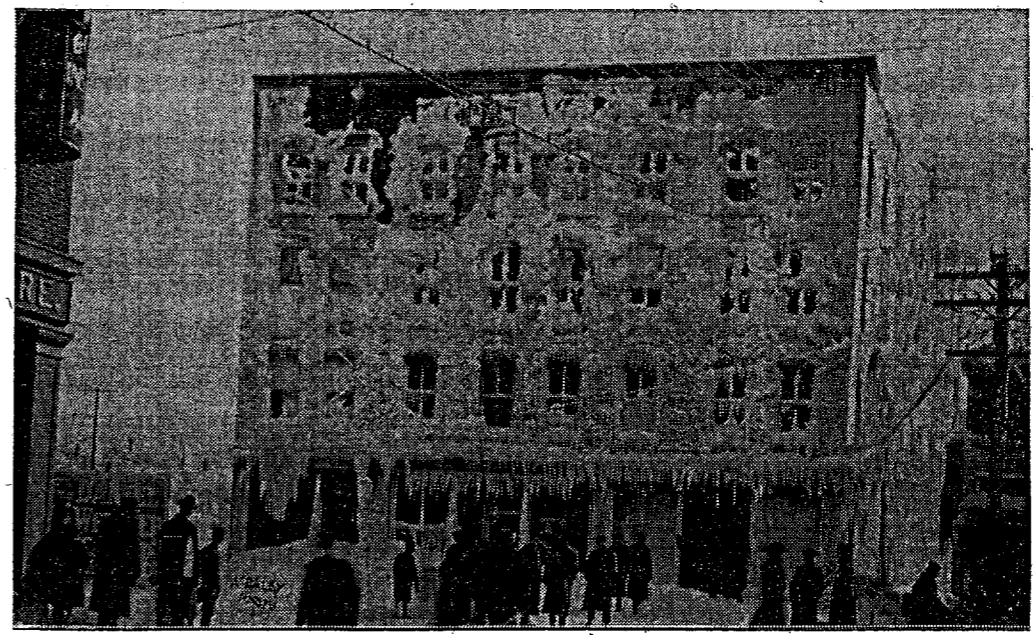
The Houlton Water Company also supplies electricity to Hodgdon, Linneus, New Limerick and a part of Ludlow.

SEWERAGE CO. ACQUIRED

The year after the town had acquired the stock of the water company it also purchased the outstanding stock of the Houlton Sewerage Company, again leaving five shares to be held by the same individuals who were directors of the water company.

This company had been organized under the provisions of a charter granted from the legislature February 22, 1887. Its organizers were J. F. Holland, Charles P. Tenney, Hudson T. Frisbie, William C. Donnell, Charles D. Merritt, Oscar F. French, J. A. Browne, Clarence H. Pierce, Walter Mansur, John H.

Death of a Hotel; Birth of a Furniture Store



From the ruins of this building in 1910, known then as the Thibodeau block, or the Hotel Lafayette, owned by William and Henry Thibodeau, there has grown one of New England's finest furniture stores. Not long after this picture was taken on the wintry morning following the fire, Frank Dunn and his partners in the Dunn Furniture Company bought the building that has become the modern five-story store today. They moved their store from the first floor of the Heywood Opera House into their new store in 1911.

pany, past and present. Probably the longest of all was that of Tommy McIntire, who was associated with the water and sewer department for more than 45 years. He entered the employ of the company before 1900 and was employed for an unbroken term of years until his death in 1942.

Former superintendent Bert McIntire came with the company in 1902, just after it had been acquired by the town, and remained until 1933. His successor, J. Norman Mullen, served as superintendent from 1935 until his death in 1953. Paul Coleman, the present superintendent, came with the company in 1949 as assistant superintendent. He combined this duty with that of treasurer of the company following the death of A. M. Stackpole and became superintendent after the passing of J. Norman Mullen in 1953.

Among the operating staff of the company, veteran among those now employed, is Royal Crockett who has been at the pumping station since 1919, and is now chief operator. Henry Haggerty, now foreman of the

Madigan Memorial Hospital Began With Bequest of Family Homestead Honoring Parents

In 1912 Albert W. Madigan, eldest son of James C. Madigan, bequeathed the stately old homestead of the Madigan family with 40 acres of land to establish a hospital in memory of his father and mother, James C. Madigan and Mary A. Madigan.

The hospital was organized as a charitable corporation under the Laws of the State of Maine in 1914. The work of modernizing the house and buildings, and making a brick addition as outlined by the trustees was completed under the direction of the late Justice John B. Madigan with the cooperation of the

water and sewer departments and Guy Smith, chief electrician and head linesmen, both joined the company in 1922.

Mrs. Robert Palmer has been bookkeeper and office manager since 1927.

late Bishop Louis S. Walsh.

The amount expended in remodeling the home and erecting the brick wing, installing X-ray equipment, operating room, etc., amounted to \$35,000. This was assumed and carried by the hospital until 1918 when it was liquidated by the Madigan family.

ENJOYED GENEROUS SUPPORT

The hospital has enjoyed generous support from the citizens and its friends. Dr. John Donovan, a Houlton born physician, who practiced in Lewiston, left the hospital his surgical instruments, office furniture, library and the residue of his estate on the passing of his wife; this amounted to \$40,000.

In 1922 the hospital found the need for more room, particularly private and semi-private rooms, and on the strength of the generous gift of Dr. Donovan, an additional wing was constructed bring-

ing the total capacity of the hospital then to 50 beds.

Rooms have been furnished and maintained by the following persons and organizations: Houlton Grange, Jason Hassell, Elks Club, Knights of Columbus, Chamber of Commerce, George B. Dunn, Mrs. Elmer Milliken, Mrs. Anna M. Cunningham, Mr. and Mrs. J. K. McKay, Miss Mary T. Crabbe and the Hospital Patroness Association. Many others have contributed large sums toward the purchase of various pieces of hospital equipment.

Several trust funds have also been established, namely, Clarence H. Pierce Trust, Anna M. Cunningham Trust, Susie L. Porter Trust, William and Mary Ross Trust, Robert F. Ward Trust, Mary Alice Lane Trust and Miss Winnifred McCarron Trust. The late Charles Moore devised several houses to the hospital, and Mary Drew of Presque Isle gave a special donation.

SISTERS OF MERCY

The Sisters of Mercy undertook the administration of the Madigan Memorial Hospital when it was opened. The Sisters have given unsparingly of their lives and talents in the art of healing and management of a modern hospital. Among the Sisters who have served it as superintendents are the following: Sister Genevieve, Sister Christina, Sister Cecelia, Sister Mary Lucia, Sister Mary Lewis, Sister Annunciata, Mother Eugenia, Sister Roberta and Sister Elizabeth.

The Patroness Association was organized in the early years of the hospital, and has continued active and of great assistance, making a valuable contribution year after year.

For more than 35 years the hospital conducted a nurses training school. This served as a supply for nurses over the county, and for the last several years has been the only school remaining north of Bangor. After the War the Mary Alice Lane dormitory on Park avenue was acquired to be used as a nurses home. This building has a furnished capacity for more than 50 nurses.

CAMPAIGN FOR FUNDS

Again in 1947 the hospital found its capacity entirely inadequate to meet the demand for hospital beds. An appeal for funds was launched under the voluntary direction of Rev. Gilbert Condit who had worked on the drive for Ricker Classical Institute and Ricker College.

The trade mark that has meant a good deal

for Maine Farmers for 35 Years



Having served the Maine potato industry so well for so long, we look ahead with confidence to making even more substantial contributions in the years ahead.

SUMMERS

"Best on Earth"

GRANUFLO FERTILIZERS

is joined by one of its distributors

A. E. MOOERS CO., INC.

Seed and Table Stock Growers and Shippers

for almost a

THREE QUARTERS of a CENTURY

and by one of its affiliates

Northern Chemical Corporation

in extending congratulations and best wishes to the
Town of Houlton on its

150th BIRTHDAY OBSERVANCE

FRANK H. TOTMAN, President

A. E. MOOERS COMPANY, Clearing House Member
NEW YORK MERCANTILE EXCHANGE

assembly, now foreman of the since 1927.

tional wing was constructed bring cal Institute and Ricker College

Charles J. Merrill, Oscar F. French, J. A. Browne, Clarence H. Pierce, Walter Mansur, John H. Bradford, Almon H. Fogg, G. H. Gilman and Black Hawk Putnam.

It was formed by many of that same band of far-sighted citizens who were responsible for so many forward steps taken by the town of Houlton and who were identified with many of the developments of those early years.

DISPOSAL PLANT

The Sewerage Department is responsible for some 25 miles of pipe in the urban area of Houlton. As a result of legislative action in 1955, the Meduxnekeag River was grouped in a Class C section which meant that the domestic wastes would have to be treated before emptying into the river. The Houlton Water Company has filed in August of this year an application for Federal and State aid in the construction of a sewage disposal unit at an estimated total cost of \$400,000. This item will be in the process of construction during the next several years and will make Houlton one of several communities in the entire state with a disposal plant.

LONGEST SERVICE

By far the longest single record of service by an officer of the company was that contributed by the late Clarence H. Pierce. One of the original incorporators of the company in 1880, he was a member of the first board of directors chosen that same year. It is known that he personally held 190 shares of stock in the corporation.

On April 15, 1893, he was chosen president of the company and served it until his death in 1933, thus establishing an unbroken connection of 53 years of affiliation with the organization, 40 of which he served as its president.

Following the death of Mr. Pierce in 1933, Bernard Archibald, then vice president assumed charge. He was followed by Thomas P. Packard who headed the company from 1935 to 1938, by William L. Blake for the years 1939 and 1940 and by Albert Mooers who was president in 1941.

Lester F. Ellis held the presidency from 1942 to 1944 and was succeeded by James C. Madigan from the seven years between 1945 and 1952. Leland O. Ludwig, Jr., was elected president in 1953 and is still serving in that office.

Some long records of service have also been established by employees of the Houlton Water Com-

LET'S GET ACQUAINTED



HOULTON'S Newest Automobile Dealer . . .

. . . It is with pride that we, HOULTON'S Newest automobile dealer, take the opportunity to extend our best wishes to the citizens of HOULTON and wish them well . . . on this, their 150th Birthday. It is with pride that we point out, that we have two of America's smartest cars to show you . . . and if you have not seen either one of these cars on display, we extend a cordial invitation to you to stop in during "Sesquicentennial week" and get acquainted.

CONGRATULATIONS . . .

TO THE CITIZENS OF HOULTON ON
THIS YOUR 150th BIRTHDAY

. . . and BEST WISHES to

THE HOULTON PIONEER TIMES . . . on
your 100 Years of Service in Aroostook County

LONDON MOTORS

Kendall Street — Houlton

LINCOLN — MERCURY — SALES AND SERVICE

