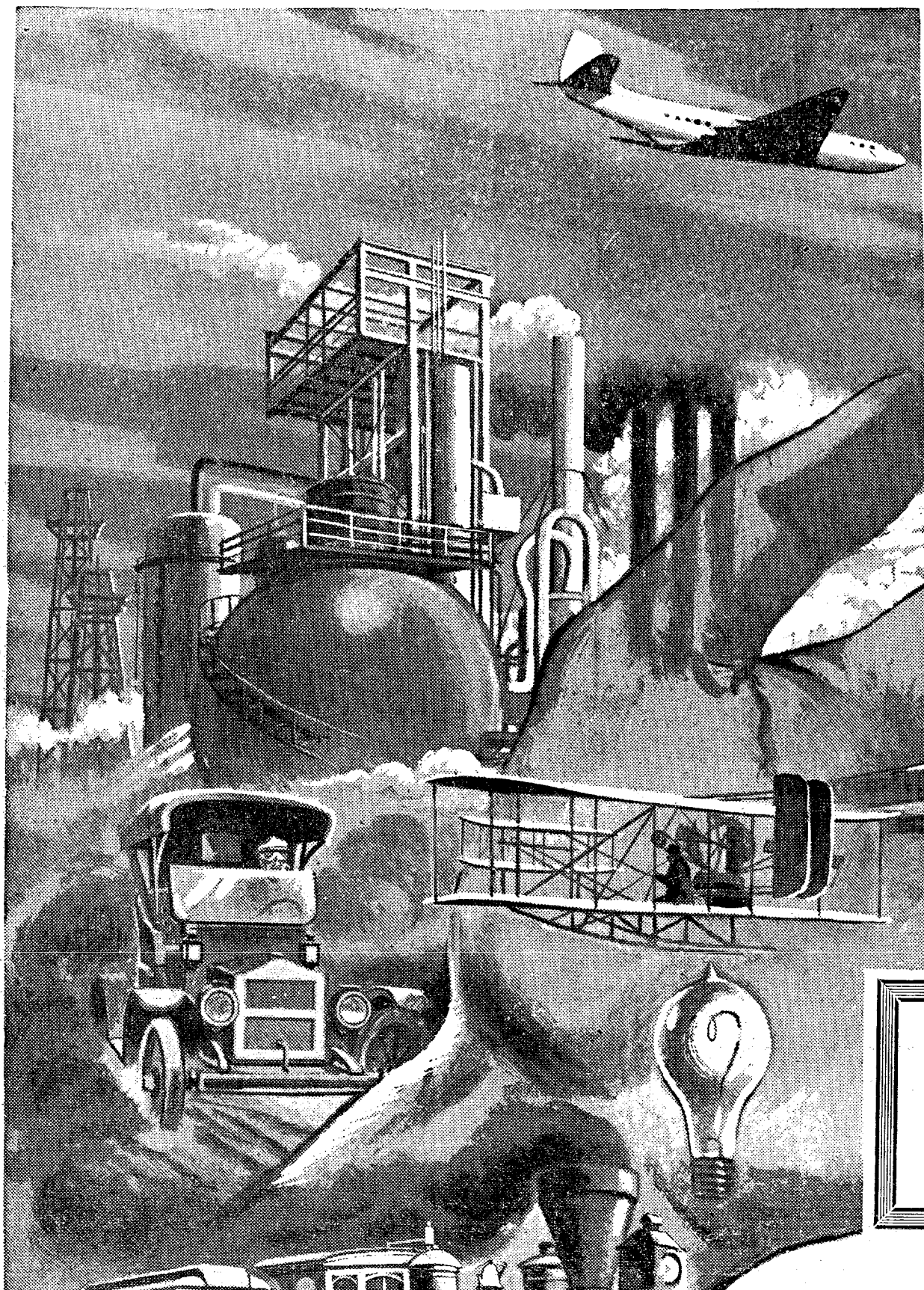


# "THE PIONEER LINE" . . .



WHEELS TURN FASTER  
NOW . . .





... The wheels of progress have speeded up since bicycles were built for two. Every year the scientists' test tubes and engineers' slide rules keep changing the lives of Mr. and Mrs. Modern America. Work is made easier thereby ... and the pace is quickened, too.

This has been true in the Trucking business too. Faster,

more modern equipment has had to be added as these changes in every day living have taken place ... America has come a long way ... from the log cabin to the skyscraper ... from the covered wagon to the jet plane ... from the hand plow to atomic energy ... We are proud that we have made the changes ... with the years' demands.

## OVER 30 YEARS in the TRUCKING BUSINESS

The ONLY DIRECT LINE BETWEEN BOSTON and NORTHERN MAINE  
SPEED — SAFETY — DEPENDABILITY

CONGRATULATIONS to HOULTON on its 150th BIRTHDAY ...  
and to the HOULTON PIONEER TIMES on its 100 Years of Service in Aroostook County ...

# O'DONNELL'S EXPRESS

HOULTON

• PRESQUE ISLE

