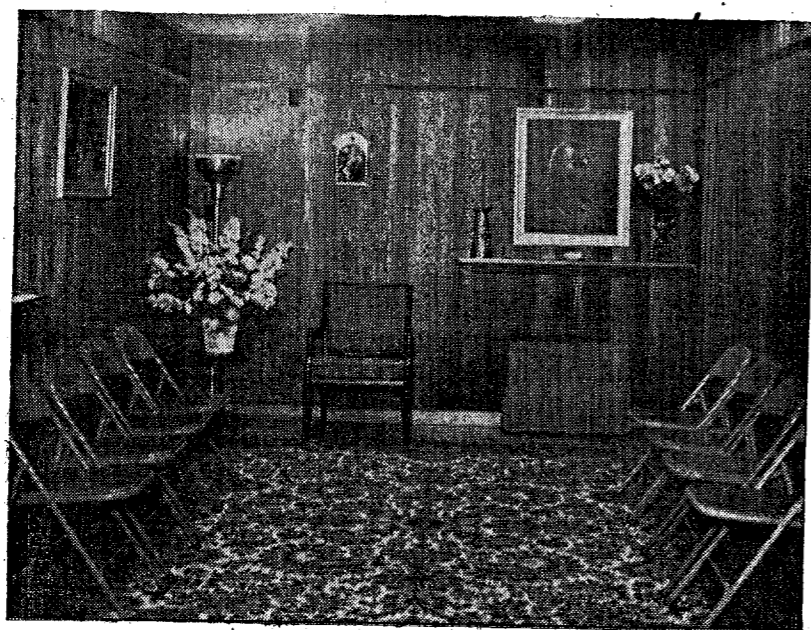


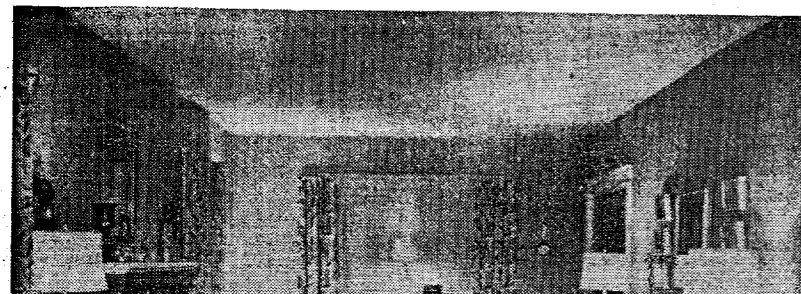
DUNN FUNERAL HOME



The family room is designed for the utmost privacy. Just back of the altar, it permits clear reception of the services in the main chapel.



This private slumber room is protected by folding doors and is for the use of those Protestant families desiring solitude.



This thoroughly modern funeral home in its convenient location combines every known facility for complete and reverent service.

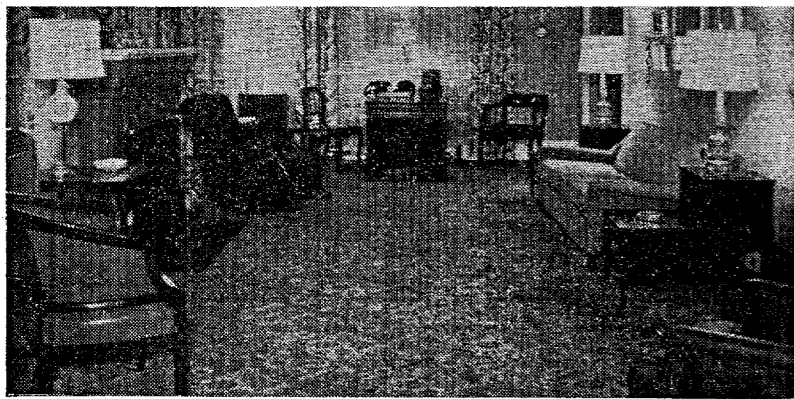
... Sympathetic and considerate understanding in a friendly and homelike atmosphere . . . our service for three generations.

When the Dunn Funeral Service was first offered in 1908, it was part of the Dunn Furniture Company. In 1939 it was incorporated as a separate company and Houlton's first Funeral Home was built.

In this year of 1957 the original quarters were enlarged, completely rebuilt, and modernized throughout with the sole objective of providing the utmost in kindly funeral service in an atmosphere of warmth and friendliness.

Thus, this year, we continue our effort to spare neither expense nor effort to continue the Dunn tradition of providing the ultimate in service through this

We welcome the opportunity to pay



The homelike atmosphere of this spacious living room makes a friendly and considerate place for the meeting and greeting of friends.

*opportunity to pay
our respects to our
fellow citizens on the
occasion of this
Sesquicentennial
Celebration.*



The appointments of our main chapel lack nothing to provide the appropriate atmosphere for funeral services.

Frank Dunn, Founder

DONALD DUNN

MRS. DONALD DUNN

ROBERT CHAPMAN

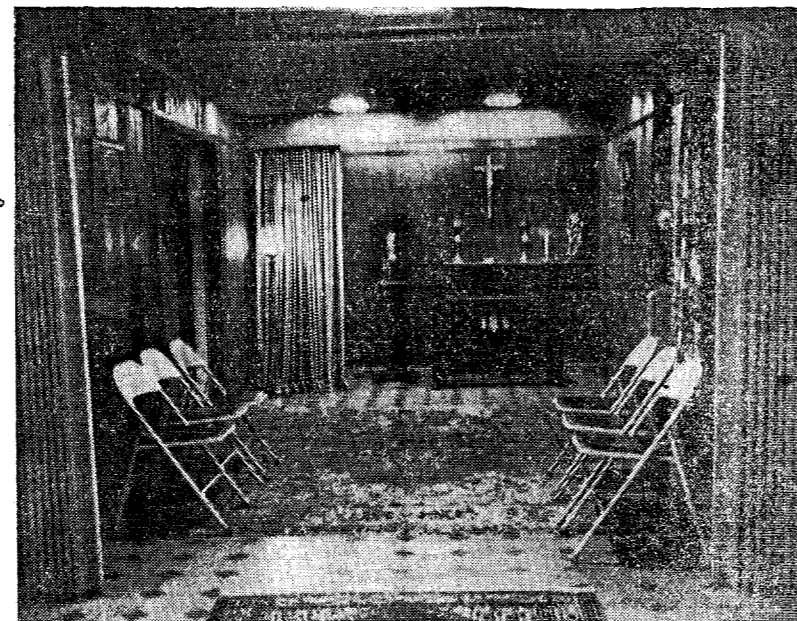
DAVID DUNN

MRS. DAVID DUNN

Donald Dunn, President

David Dunn, Treasurer

ELEVEN
PARK STREET
HOULTON



A private slumber room is also provided for the seclusion of Catholic families and their friends.

Thus, this year, we continue our effort to spare neither expense nor effort to continue the Dunn tradition of providing the ultimate in service through this wholly new mortuary . . . the finest of its kind in Maine.

We are proud to rededicate this Funeral Home in fitting commemoration of our half a century of service to this area.

Aside from the facilities here illustrated, the building also includes a modern five room apartment on the second floor, selection and preparation rooms on the lower level. It is completely air conditioned and all rooms have either wall-to-wall carpeting or resilient cork flooring. Ample off-street parking is a greatly appreciated convenience.



Our motorized fleet of 1957 vehicles includes the latest Cadillac version of a two-tone Funeral Coach, and an Ambulance, both equipped with every modern convenience for safety, comfort and utility.